

East Hawaii Culture Center Presents

A JOURNEY THROUGH LIGHT AND COLOR



Gala Opening

Friday, January 7th, 2011 5:30pm-7:30pm

Exhibition

January 8– January 27, 2011

Gallery Hours

Monday– Saturday 10am– 4pm

141 Kalakaua Street

(808) 961-5711 arts@ehcc.org

\$1.00 per copy

*Kathleen
T. Parr,
Central Gallery*



"Wind Nude #7"
Black /White Infrared \$300



"Hula Dancer At Sunset"
Black /White Infrared \$300



"Mahina, Hula Dancing"
Black /White Infrared \$400



"Nude And Tree II" Black/White
Infrared, Hand Colored \$300



"Nude With Flowers"
Black /White Infrared \$300



"Nude In Mirror"
Black /White Infrared \$300



"Water Nude"
Black /White infrared \$585



"Women In Field"
Black /White Infrared \$300



"Reflection"
Black /White Infrared \$300



"Dorothea"
Black /White Infrared \$300



"Nude In Tree"
Black /White Infrared \$300



"Place of Refuge #69"
Black /White Infrared \$300



"Place Of Refuge #74"
Black /White Infrared \$300



"Place Of Refuge #1"
Black /White Infrared \$300



"Place Of Refuge #66"
Black /White Infrared \$375



"Palm Grove I"
Black /White Infrared \$300



"Palm Grove III"
Black /White Infrared \$300



"Palm Grove II"
Black /White Infrared \$300



"Punaluu"
Black /White Infrared \$375



"Foliage"
Black /White Infrared \$300



"Paleaku"
Black /White Infrared \$300



"Vines"
Black /White Infrared \$300



"The Red Road"
Black /White Infrared \$300



**"Boat, Molokai" Black /White
Infrared, Hand Colored \$300**



**"Beach Palms, Thailand" Polaroid
SX-70 Manipulation, Hand
Colored \$525**



**"East End, Molokai" Black /White
Infrared, Hand Colored\$300**



**"Yin Yang Series I"
Polaroid image Transfer\$300**



**"Tree And Pond II" Black /White
Infrared, Hand Colored \$300**



**"Country Lane, Hawaii" Black/
White Infrared, Canvas \$525**



**"Istanbul Sunset" Polaroid SX-70
Manipulation, Hand Colored
\$525**



**"Beach Umbrellas, Thailand"
Polarized SX-70 Manipulation,
Hand Colored \$525**



**"Sunflower" Polaroid SX-70
Manipulation \$300**



**"Autumn Tree" Polaroid SX-70
Manipulation, Hand Colored \$525**



**"Lamp, Florence" Polaroid
SX-70 Manipulation \$300**



**"Nudes Embracing II" Polaroid Im-
age Transfer, Hand Colored \$300**



"Steps II" Polaroid Image Transfer, Hand Colored \$800



"Island Paradise" Polaroid Emulsion Transfer \$425



"Jacaranda Tree" Polaroid Image Transfer, Hand Colored \$425



"Chevy Truck" Polaroid SX-70 Manipulation \$525



"Forest" Polarized Image Transferred, Hand Colored \$425



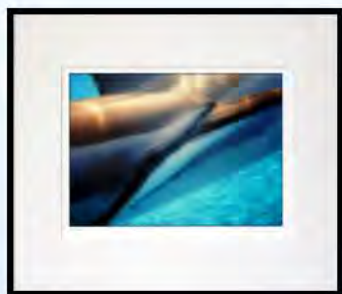
"Bamboo" Polarized Image Transfer, Hand Colored \$300



**"Mary and Palms" Polarized
SX-70 Manipulation \$525**



**"Estero, Point Reyes" Polaroid
Image Transferred \$525**



**"Dolphin #2076"
Water Color Pigment \$300**



**"Nude And Dolphins" Polaroid
Image Transfer, Hand
Colored \$300**



**"Horses" Polarized Image Trans-
ferred, Hand Colored \$425**



**"Ti Leaves" Polaroid SX-70
Manipulation \$300**



"Place Of Refuge Fish Pond"
Black /White Infrared \$300



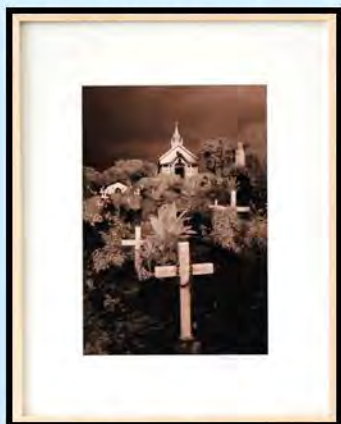
"Mauna Kea Solstice"
Black /White Infrared \$300



"Japanese Cemetery #1"
Black /White Infrared \$300



"Japanese Cemetery #2"
Black /White Infrared \$300



"The Painted Church"
Black /White Infrared \$300



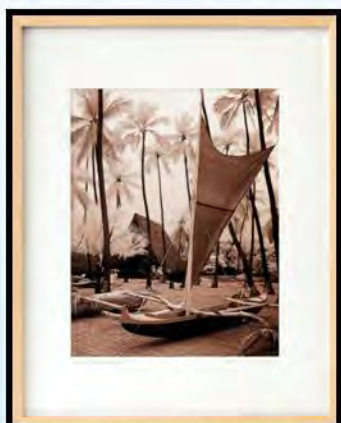
"Koi Pond"
Black /White Infrared \$300



"Place Of Refuge Festival"
Black /White Infrared \$300



"Five Dolphins"
Underwater Color Pigment \$300



"Place Of Refuge Festival II"
Black / White Infrared \$300



"Humpback Whale Baby ,Tonga"
Underwater Color Pigment \$300



"Tikis, Place Of Refuge"
Black /White Infrared \$300



"Dolphin Dance" Underwater
Color Pigment \$485 Unframed



"The Grand Canal, Carnevale, Venice" Polaroid Image Transfer, Hand Colored, Canvas \$475



"Bridge, Burano" Polaroid SX-70 Manipulation, Canvas \$525



"Gondolas, Carnevale, Venice" Polaroid SX-70 Manipulation, Canvas \$475



"Jester, Carnevale, Venice" Polaroid SX-70 Manipulation, Canvas \$525



"Mimes, Carnevale, Venice" Polaroid SX-70 Manipulation, Canvas \$525



"Carnevale Couple, Venice" Polaroid Image Transfer, Hand Colored, Canvas \$525



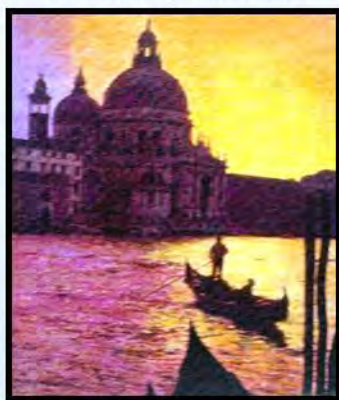
"Lost Alien, Camevale, Venice"
Polaroid Image Transfer, Hand
Colored, Canvas \$475



"Smiling Mask Camevale, Ven-
ice" Polaroid Image Transfer,
Hand Colored, Canvas \$475



"Golden Massk, Camevale, Ven-
ice" Polaroid Emulsion Transfer,
Canvas Wrap \$525



"Gondola Sunset Camevale,
Venice" Polaroid Image Trans-
fer, Hand Colored, Canvas \$475



"Red Rose" Polaroid Image
Transfer, Hand Colored \$300

*Fancene
Heart,
Mauka Gallery*



"Passion and Compassion"
Watercolor \$5000



"Travelers Prayer"
Watercolor \$2500



"Receiving"
Watercolor \$2500



"Healing The Art"
Watercolor \$5000



"Reef Neighbors"
Watercolor \$2500



"Offering at Volcano"
Watercolor \$2500



"Standing In The Light"
Watercolor \$2500



"Octomotion"
Watercolor \$2500



"Elemental Embrace"
Watercolor \$2500



"One Drop"
Watercolor \$5000



"Inter-Dimensional Escort"
Watercolor \$5000



"Green Gateway"
Watercolor \$2500



"Hoopono pono Sunset"
Watercolor \$5000



"Flaming Tropical's"
Watercolor \$2500



"Exuberant Display"
Watercolor \$5000



"Earth Prayers"
Watercolor \$5000



"The Kiss"
Watercolor \$5000

*Pamela
Polton
Thomas,
Makai Gallery*



"Banana Moon"
Watercolor \$1800



"The Empress"
Watercolors \$2000



"The Face Of God" Watercolor/
Mixed Medium \$1800



"The Dancing Trees"
Watercolor \$1200



"The Lanai"
Watercolor \$2000



"Mamasangetsabath"
Watercolors \$1200



"The Dream" Watercolor/ Mixed
Medium \$1800



"Hi'akaikapoliopele"
Acrylic/ Mixed \$5000



"Richardson's"
Watercolors \$2000



"Earth Spirit" Acrylic/ Mixed
\$5000



"Voice Of the Feminine" Water-
color/ Mixed Medium \$3000



"The Sea"
Watercolors \$2000



"The Fish"
Watercolors \$2000



"Mamasanin Hilo"
Watercolors \$1200



"Sunflowers"
Watercolor \$1800

EHCC Board of Directors

*Kay K. Sakai
Kay Yokoyama
Judy Hara
Michael Marshall
Linda New
Jim Thompson
Quack Moore
Dr. Tony Ludden
Dr. Alfred Mina
Tom Geballe
Sarah Talich*

Office Staff

*Dennis Taniguchi
Rondelle Lee
Claudine Perreira
Mary Anne De May
Colette Wharton*

Gallery Committee

*Kay K. Sakai
Charlene Asato
Dorothy Hienrich
Ragnhild Langlet
Violet Murakami
Arenzo Smith*

Installation

Randy Takaki

Catalog Design

*Colette Wharton
Rondelle Lee
Claudine Perreira*